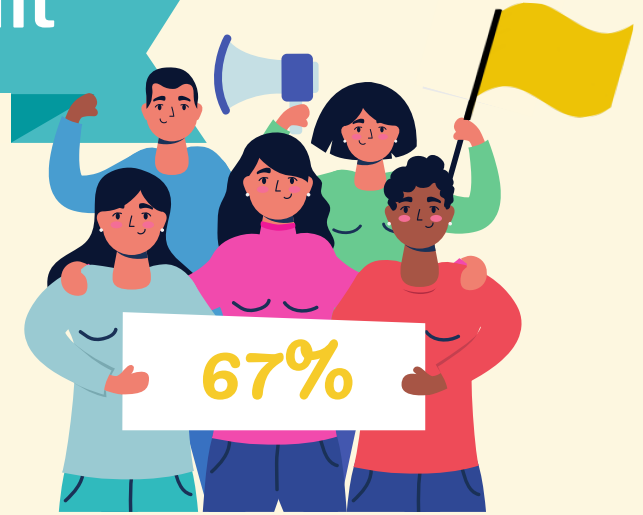


Hiring for Job & Culture fit



28%

of workers who left a company in the first 90 days, said company culture was the reason they left.

of recruiters consider culture fit to be an important factor when hiring, but haven't had a way of measuring it.

In 2021 there was a **21%** increase in job postings advertising skills and responsibilities instead of qualifications and requirements.

The number of positions that don't require a degree also increased by nearly

40%

in 2020 compared to 2019.



Between 2017 and 2019, employers reduced degree requirements for

46%

of middle-skill positions and

31%

of high-skill positions.



Businesses using a Personality & Culture fit hiring strategy found a

23%

Faster profit growth

22%

Higher revenue growth

67%

lower employee turnover

